

# Studio 3

## Technical description

Rotemannavägen 16, 145 57 Norsborg



### Description

Studio 3 is adapted for recordings of, for example, commercials, music videos and feature films, as well as for rehearsals of circus, music, theater, dance and magic.

The studio is also used for scenography construction, corporate events and workshops in connection with conferences.

### Area

388 sqm

### Maximum number of people

149 people

### Facilities

Handicap accessibility, Wi-Fi, toilet, shower, kitchenette

## Subtopia



## Floor

- Floor area 388 sqm.
- Area for building 370 sqm.
- Maximum length 24 m.
- Maximum width 16 m.
- Floor load max 3 tons / sqm.
- Gray epoxy surface, not paintable.
- Concrete.

## Ceiling

- 5.87 m.
- Height under truss, 5.48 m.
- Ceiling color gray.
- Sound attenuation Ecophone.
- Beam 6 m c / c.
- Fixed attachment points maximum load 300 kg.
- Fluorescent lamps.

## Floor standing truss

- Area 12 × 12 m.
- Height 5,48 m.
- Prolyte H30 V with Doughty 48 × 3 mm,
- Maximum total load within 4 legs 1200 kg.

## Walls

- Sound attenuation: light gray ecophone.
- 1 gate on the ground floor, 3 × 3 m.
- Rail with black fabric separation that frames truss.
- Heating elements along the walls.

## Electricity

- 1 × 16 A, 1 × 32 A and 1 × 63 A (by load in).

## Waste fractions

- Household waste, separate garbage room (emptying Tuesdays).

## Security (extra order)

- Motion alarm.
- External surveillance is handled by security company (extra surveillance can be ordered).
- Smoke detector.
- 2 emergency exits, one of which leads to a nearby room that has a separate alarm.

## Technical equipment (extra order)

- Zip-up.
- Ladder.

## Other

- Café seating 3 tables 12 chairs.
- Folding table, 180 × 80cm 1 pc.
- Sofa 1 pc.

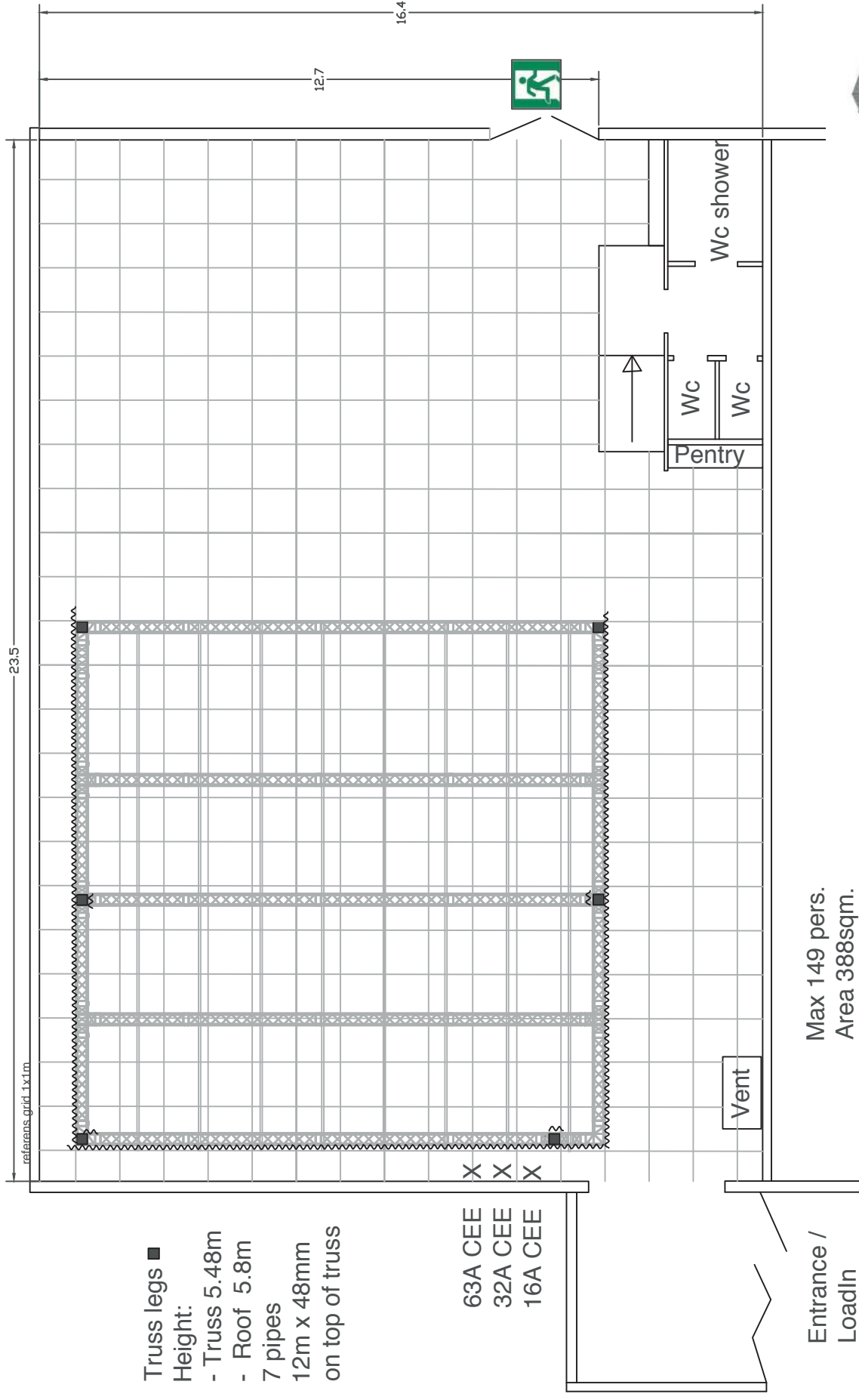
## Facilities

- Entrance via port.
- Kitchenette with fridge & freezer, microwave, dishwasher.
- 2 WC.
- 1 RWC, with shower.
- Wi-Fi.

## Parking

- Parking nearby area about 25 cars (p-disc.)
- Paid parking 80 places.

# Sketch Studio 3



Truss legs ■  
 Height:  
 - Truss 5.48m  
 - Roof 5.8m  
 7 pipes  
 12m x 48mm  
 on top of truss

X  
 63A CEE  
 X  
 32A CEE  
 X  
 16A CEE

Entrance /  
 LoadIn  
 Height 3m  
 Width 3m

Max 149 pers.  
 Area 388sqm.  
 ConcreteFloor.  
 Truss 12x12m (see drawing)

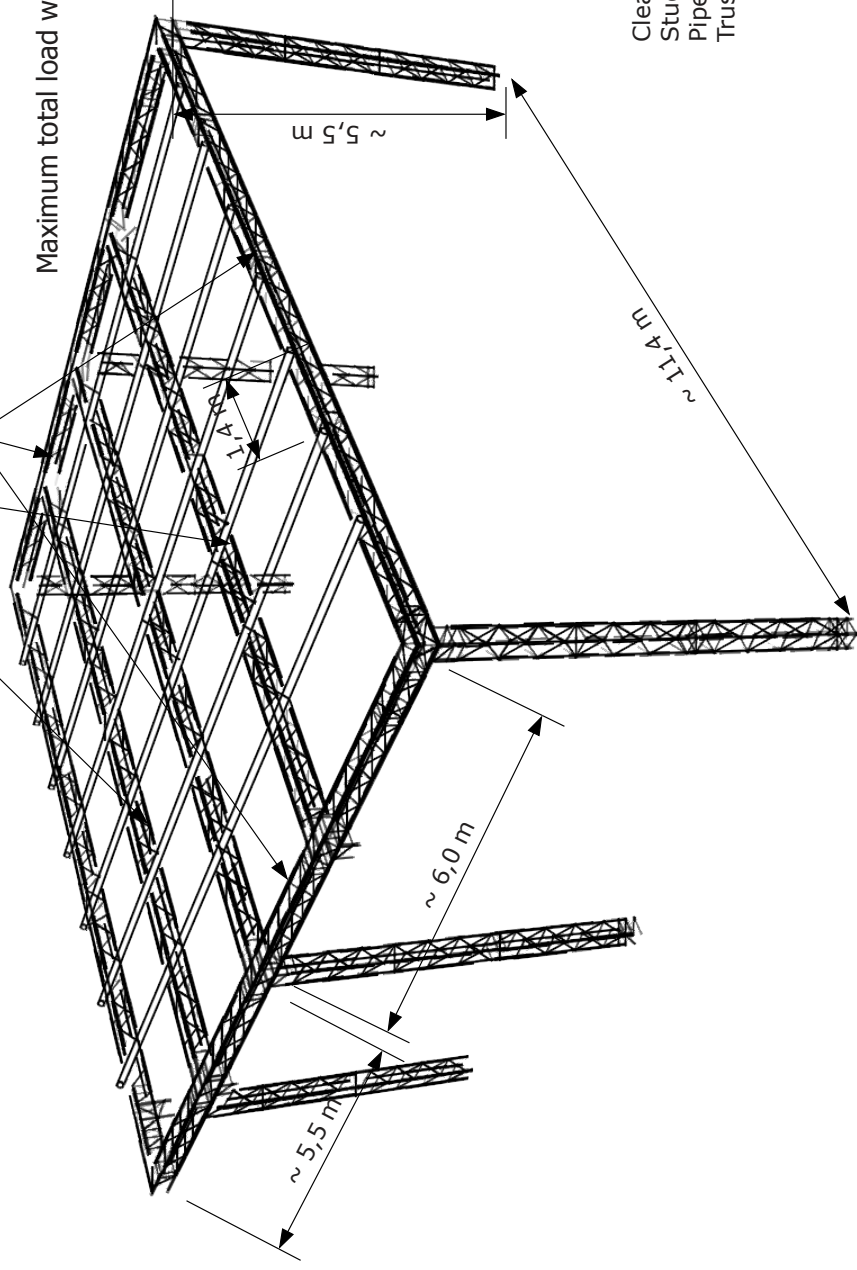


# Maxlaster Truss

## Truss Studio 3

Prolyte H30V trussing with  
Doughty 48x3mm tubes on top

- Max 50kg UDL and 25kg 3PL and 40kgCPL on pipes.
  - Max 250kg UDL and 90kg 3PL and 150kg CPL on each crossover truss
  - Max 400 kg UDL and 150kg 3PL and 200kg CPL on each perimeter truss
- Maximum total load within 4 legs 1200 kg



Clearance to:

Studio roof min	5,87M
Pipes	5,76M
Truss	5,48M

Any modification or alteration of the structure is strictly prohibited.

No dynamic loads is allowed without approval from Subtopia rep.